



EMI SUPPRESSORS – SH TYPE

(1) ORDERING CODE

EL6E SH 11.5x0.8x20

Material _____

Type _____

Inside Length E _____

Inside Width D _____

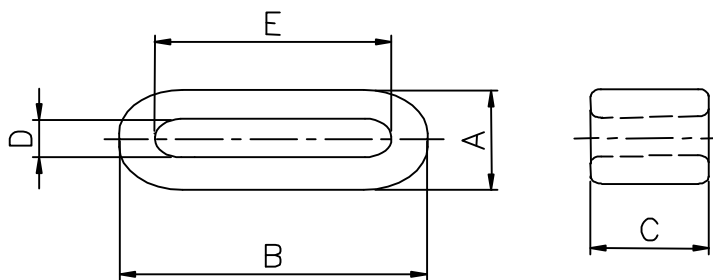
Length C _____



(2) SUITABLE MATERIAL

EL6E EHF60 EL5

(3) SHAPE AND DIMENSIONS



UNIT:MM

CORES	A	B	C	D	E
SH 11.5×0.8×20	4.70±0.50	16.0±0.50	20.0±0.50	0.80±0.30	11.5±0.20
SH 15×4.5×10	9.50±0.30	20.0±0.50	10.0±0.30	4.50±0.20	15.0±0.30
SH 18×1.0×15	6.00±0.30	23.0±0.50	15.0±0.30	1.00±0.30	18.0±0.40
SH 22×6×1.2	5.00±0.30	26.0±0.50	6.00±0.30	1.20±0.30	22.0±0.50
SH 22×7×1.2	5.00±0.30	26.0±0.50	7.00±0.30	1.20±0.30	22.0±0.50
SH 22×8×1.2	5.00±0.30	26.0±0.50	8.00±0.30	1.20±0.30	22.0±0.50
SH 22×9×1.2	5.00±0.30	26.0±0.50	9.00±0.30	1.20±0.30	22.0±0.50
SH 24.5×0.7×20	5.00±0.30	24.5±0.40	20.0±0.40	0.70±0.20	20.0±0.50
SH 27×1.3×8	6.50±0.30	33.5±0.40	8.00±0.30	1.30±0.30	27.0±0.50
SH 27×1.3×10	6.50±0.30	33.5±0.40	10.0±0.30	1.30±0.30	27.0±0.50
SH 27×1.3×12	6.50±0.30	33.5±0.40	12.0±0.30	1.30±0.30	27.0±0.50
SH 27×1.3×15	6.50±0.30	33.5±0.40	15.0±0.35	1.30±0.30	27.0±0.50
SH 27×1.3×20	6.50±0.30	33.5±0.40	20.0±0.40	1.30±0.30	27.0±0.50
SH 35×1.3×10	6.50±0.30	40.0±0.50	10.0±0.30	1.30±0.30	35.0±0.50
SH 35×1.3×12	6.50±0.30	40.0±0.50	12.0±0.30	1.30±0.30	35.0±0.50
SH 41.5×1.0×12	5.00±0.30	46.3±0.50	12.0±0.30	1.00±0.20	41.5±0.50
SH 52×1.3×12	5.00±0.30	56.0±0.50	12.0±0.30	1.30±0.30	52.0±0.50